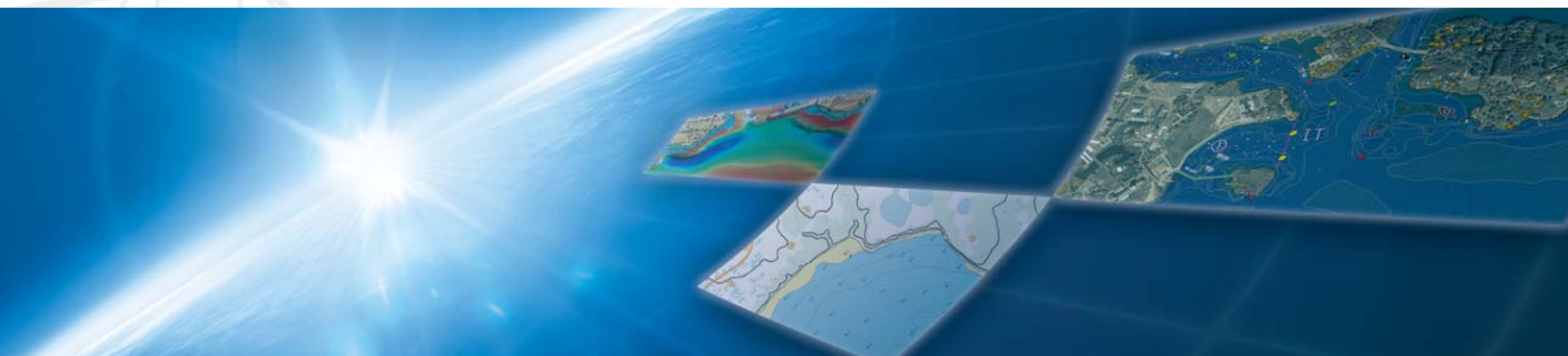


CARIS

Spatial Fusion[®] Enterprise



Delivering Marine Data for Web Discovery

Spatial Fusion[®] Enterprise (SFE) enables your organization to deliver marine and hydrographic information to the Web using the latest open source technology and standards.

Ping-to-Chart™ Workflow

Adding SFE to your Ping-to-Chart™ workflow allows your organization to share its data and expertise with a wider audience.

In addition to the many common geospatial formats that are supported by SFE, data can also be served directly from CARIS Bathy DataBASE and CARIS HPD. This allows for highly intuitive discovery and interrogation of your organization's databases through the Web.

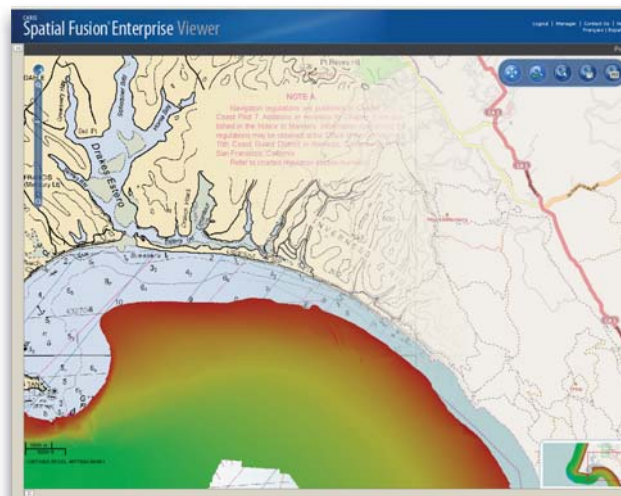
Interoperability

SFE supports Open Geospatial Consortium, Inc.® (OGC) standards for Web Map Service (WMS), Web Feature Service (WFS), Web Map Tile Service (WMTS) and Web Coverage Service (WCS), providing data sharing and interoperability. Furthermore, SFE offers Google™ Maps as a Web mapping service through its API that can be integrated with your own data.

Scaleable Architecture

SFE consists of a Server and Viewer application, both of which are easily configured through user-friendly

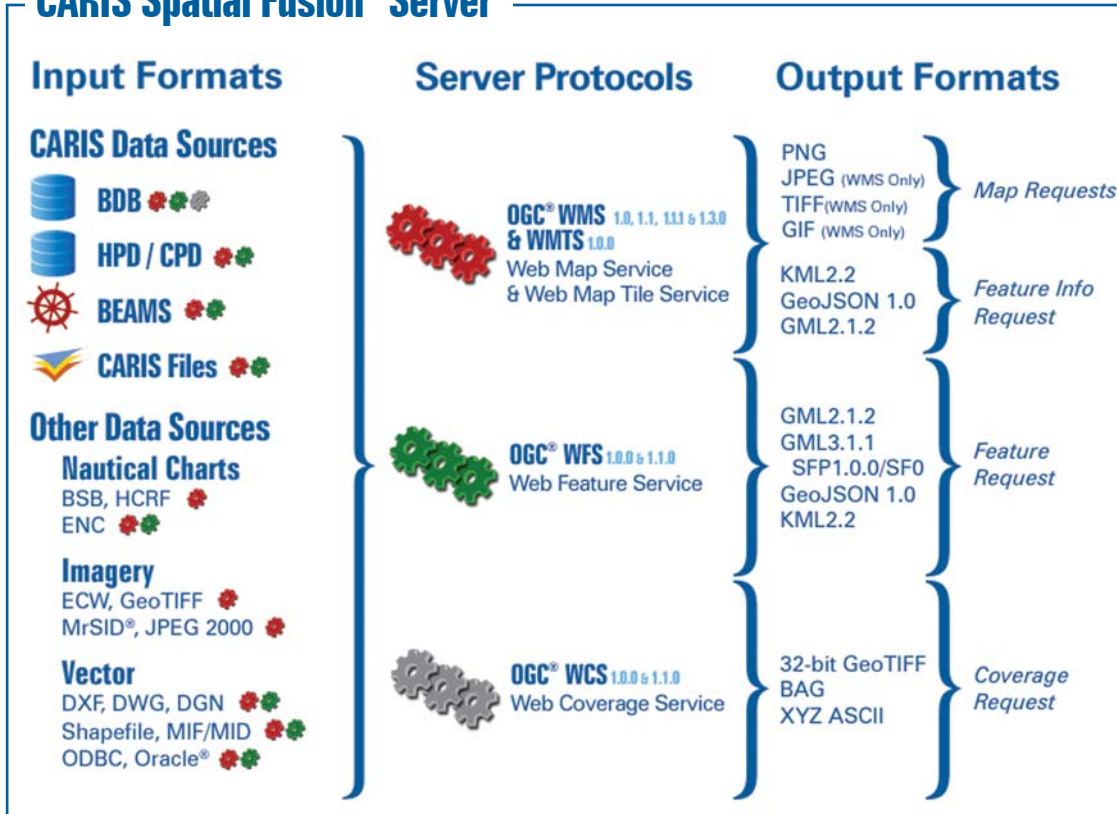
Web interfaces. The SFE Server and Viewer can be used independently of each other with any standards based GIS but when used together they provide a powerful solution for viewing data at the Local, National or Global level.



Seamless integration of OpenStreetMap with BSB raster nautical chart and high resolution bathymetry from CARIS Bathy DataBASE.

CARIS Spatial Fusion® Enterprise

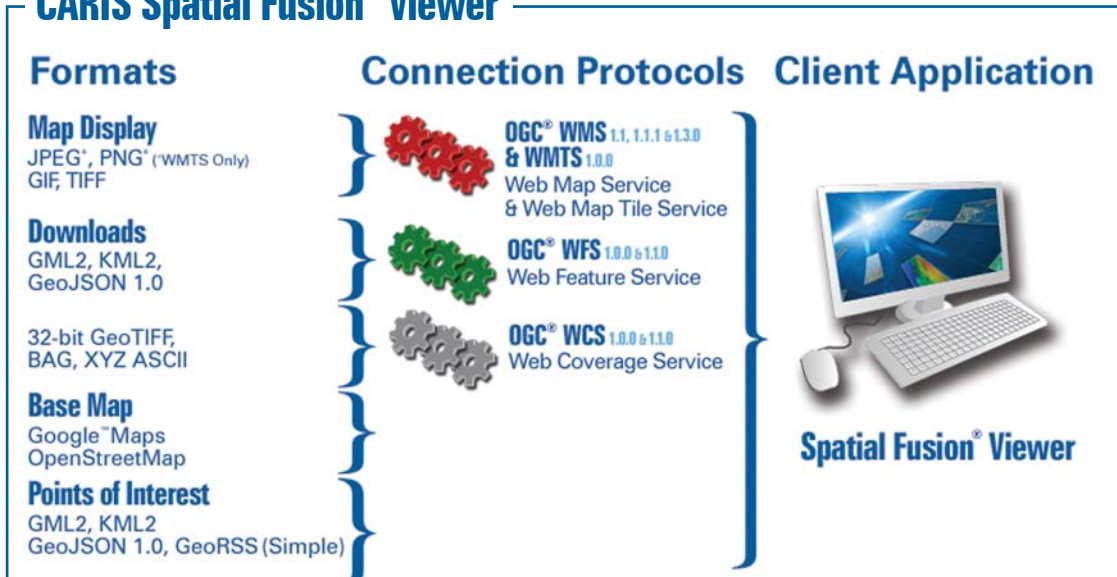
CARIS Spatial Fusion® Server



Features

- Points of Interest using GML, KML, GeoJSON, and GeoRSS
- Support for most common geospatial data formats
- Bathy DataBase for high density DEM's
- HPD chart features
- Interoperability through OGC® standards for WMS, WMTS, WFS, WCS, GML, and KML
- Integration with Google™ Maps and OpenStreetMap
- Metadata Interrogation
- Data selections by point and range
- Data extraction to GML, KML, and GeoJSON formats
- Print Map Window
- Intuitive configuration through Web-based tools
- Security through configuration of users and roles
- Multi-language support

CARIS Spatial Fusion® Viewer



Legend



CARIS
 115 Waggoners Lane
 Fredericton, New Brunswick
 E3B 2L4 Canada
 Tel +1.506.458.8533
 Fax +1.506.459.3849
 info@caris.com

CARIS BV
 Mgr. van Oorschotstraat 13
 PO Box 47 5473 ZG
 Heeswijk, The Netherlands
 Tel +31.413.296010
 Fax +31.413.296012
 info@caris.nl

CARIS USA
 415 N Alfred Street
 Alexandria VA 22314
 United States
 Tel +1.703.299.9712
 Fax +1.703.299.9715
 carisusa@caris.com

CARIS Asia Pacific
 Suite 1, Innovation House
 Mawson Lakes Boulevard
 Mawson Lakes SA 5095
 Australia
 Tel +61.0.8.8260.8180
 Fax +61.0.8.8260.8100
 info@caris.com